



STADTHOTEL am Römerturm

RAUM HÜRTH

Raummaße:

Größe	49,7 qm
Länge	7,9 m
Breite	6,2 m
Höhe	2,65 m

Kapazitäten:

Stuhlreihen	35 Personen
E-Form	24 Personen
U-Form	21 Personen
Karree	24 Personen
Stuhlkreis	25 Personen
Bankett - Tafel v1	36 Personen
Bankett - Tafel v2	24 Personen

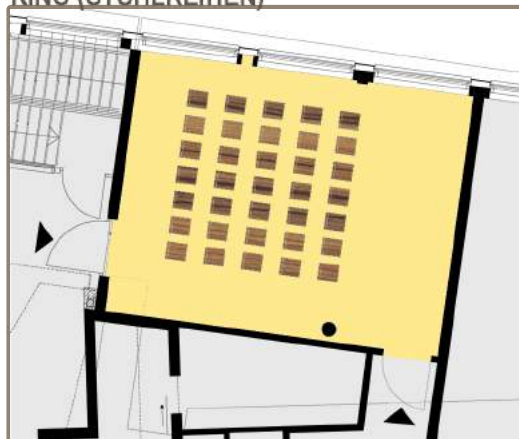
Ausstattung:

- Tageslicht
- Klimaanlage
- Deckenbeamer
- Bodenbelag Parkett

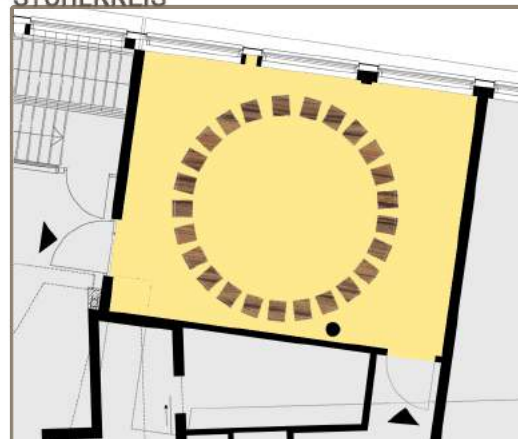
Legende:

- Säule

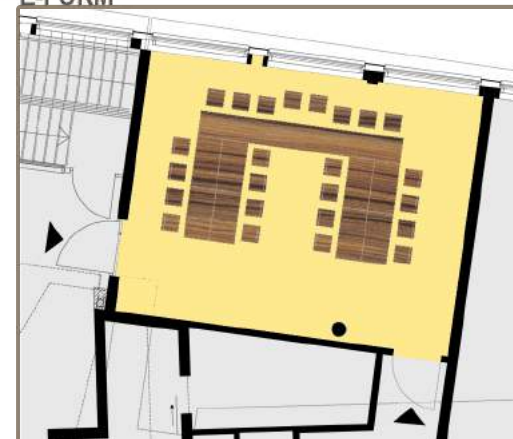
KINO (STUHLREIHEN)



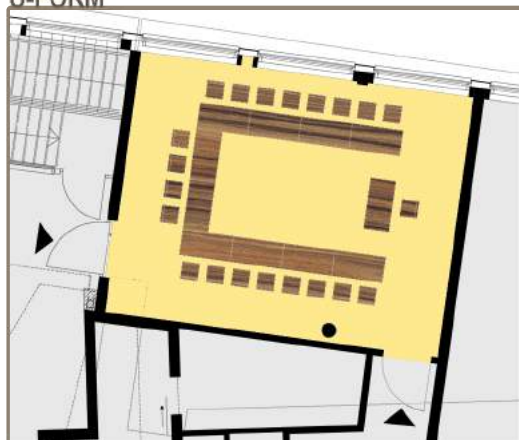
STUHLKREIS



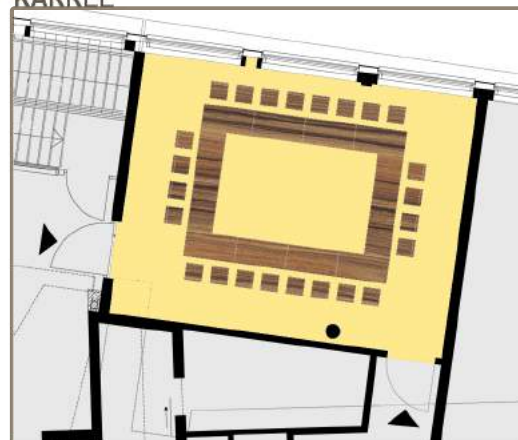
E-FORM



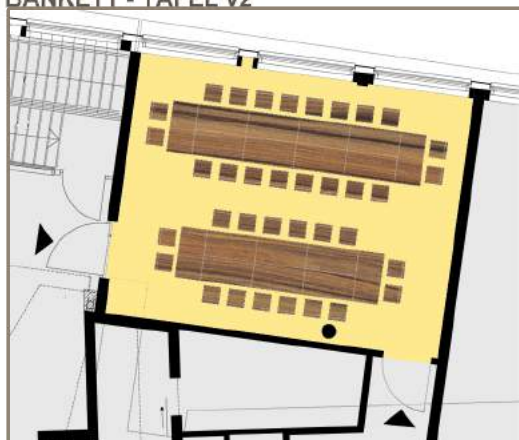
U-FORM



KARREE



BANKETT - TAFEL v2



BANKETT - TAFEL v1

